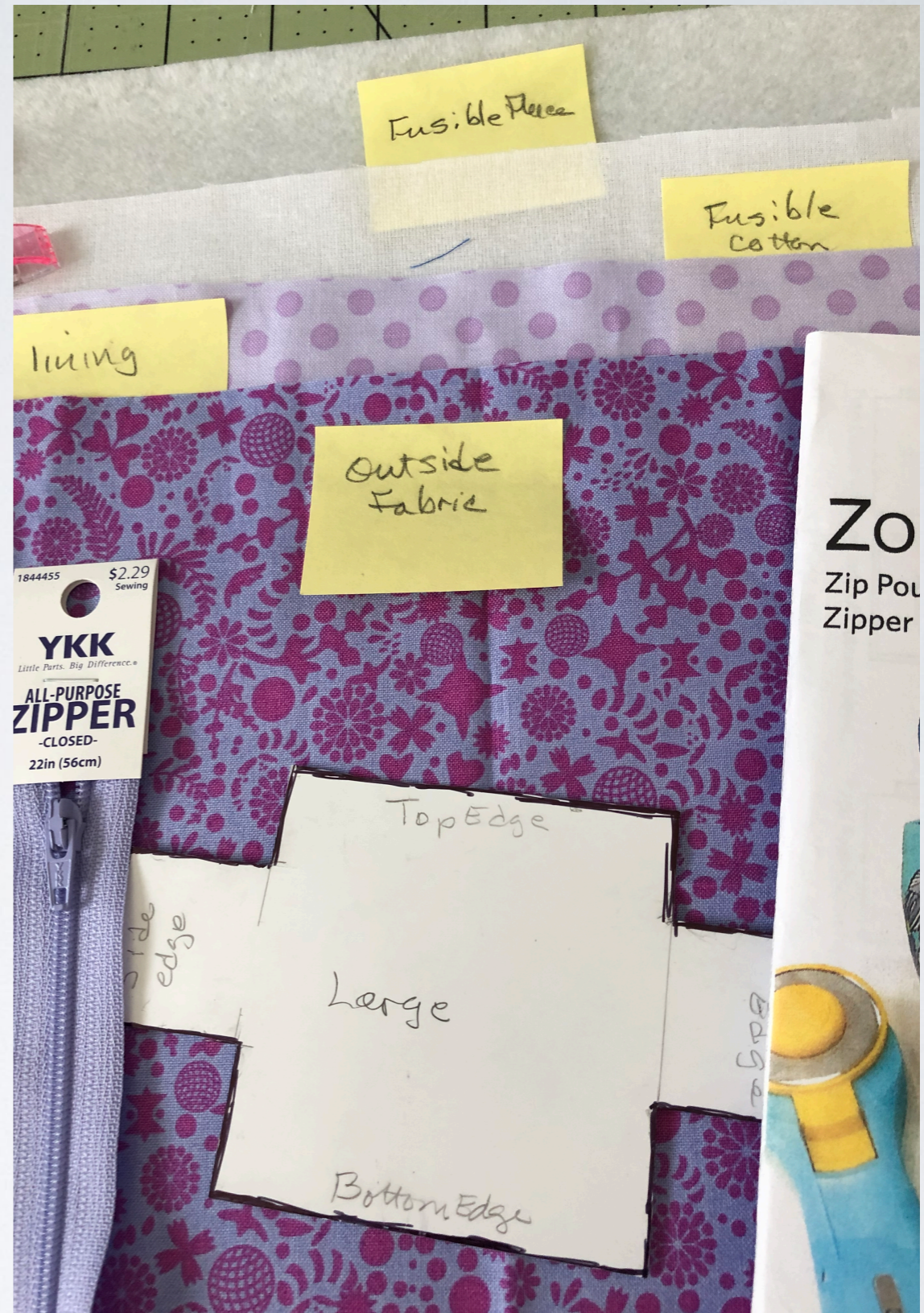


ZOEY ZIP BAG BY LAZY GIRL DESIGNS

A Zip Bag with Zipper Handles

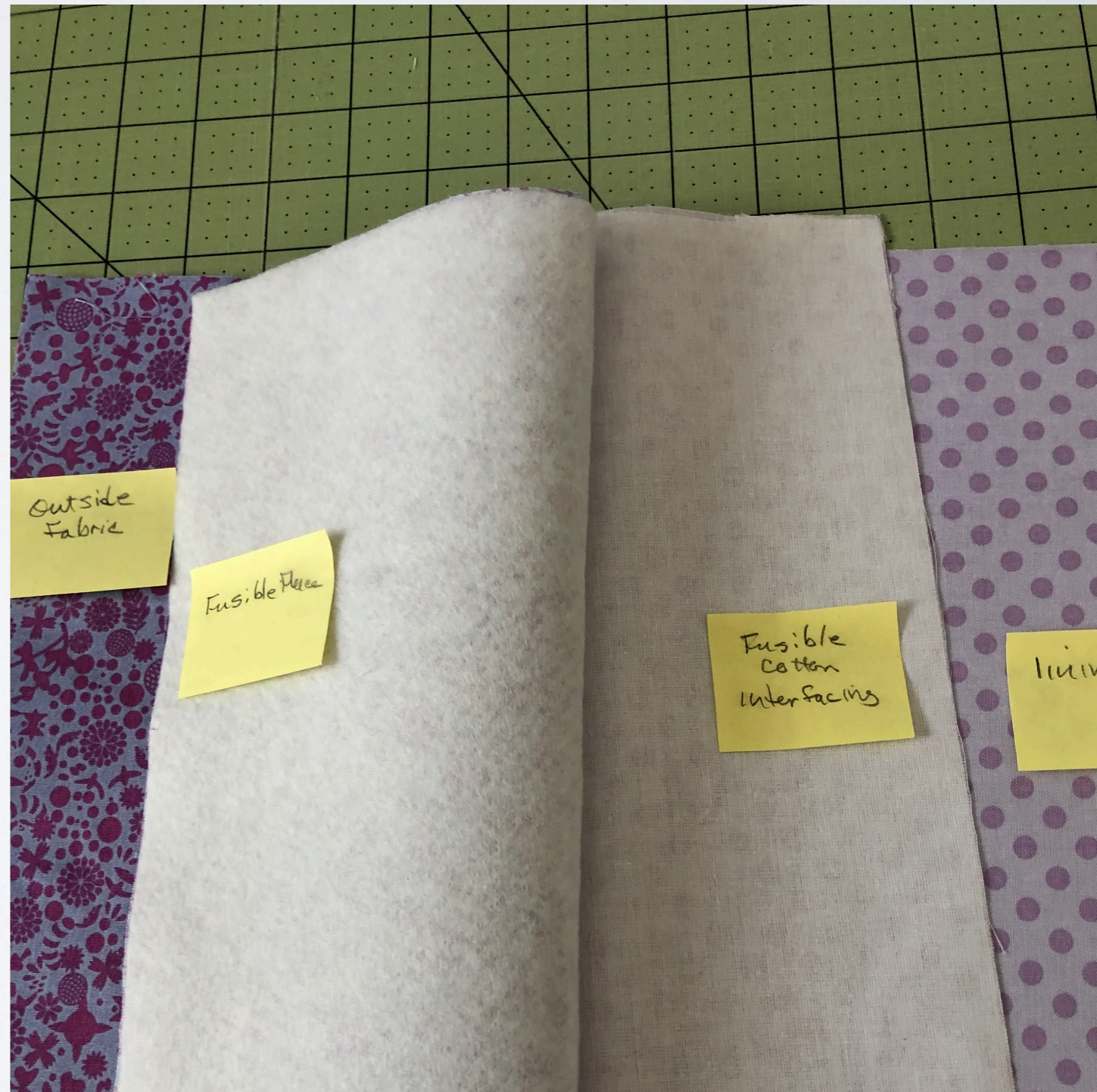


MATERIALS NEEDED
Main Fabric
Lining
Fusible fleece
Fusible Cotton interfacing
Zipper
Pattern/template
Matching thread



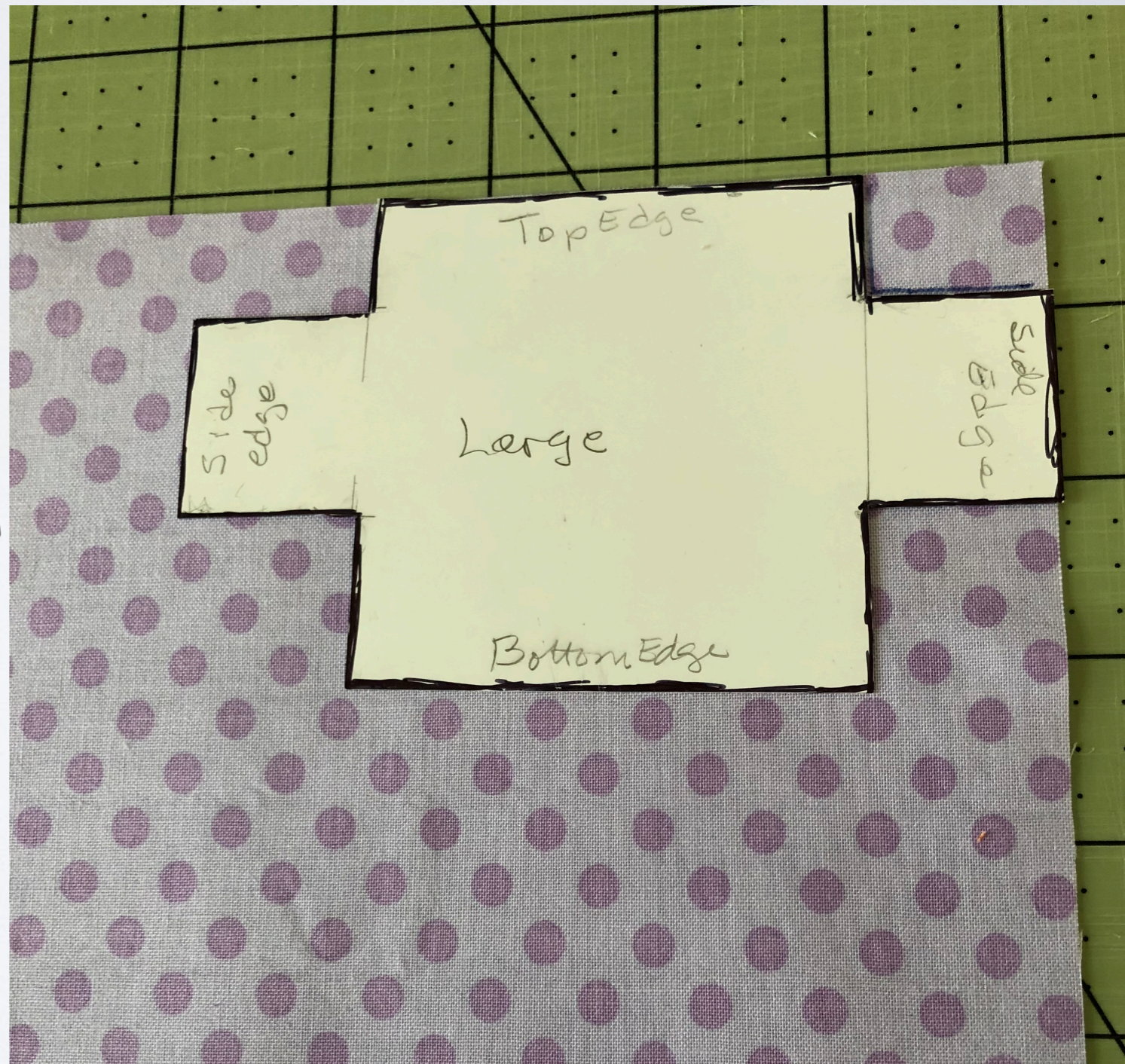
FUSE

- Fuse fleece to wrong of main fabric.
- Fuse cotton interfacing to wrong side of lining.

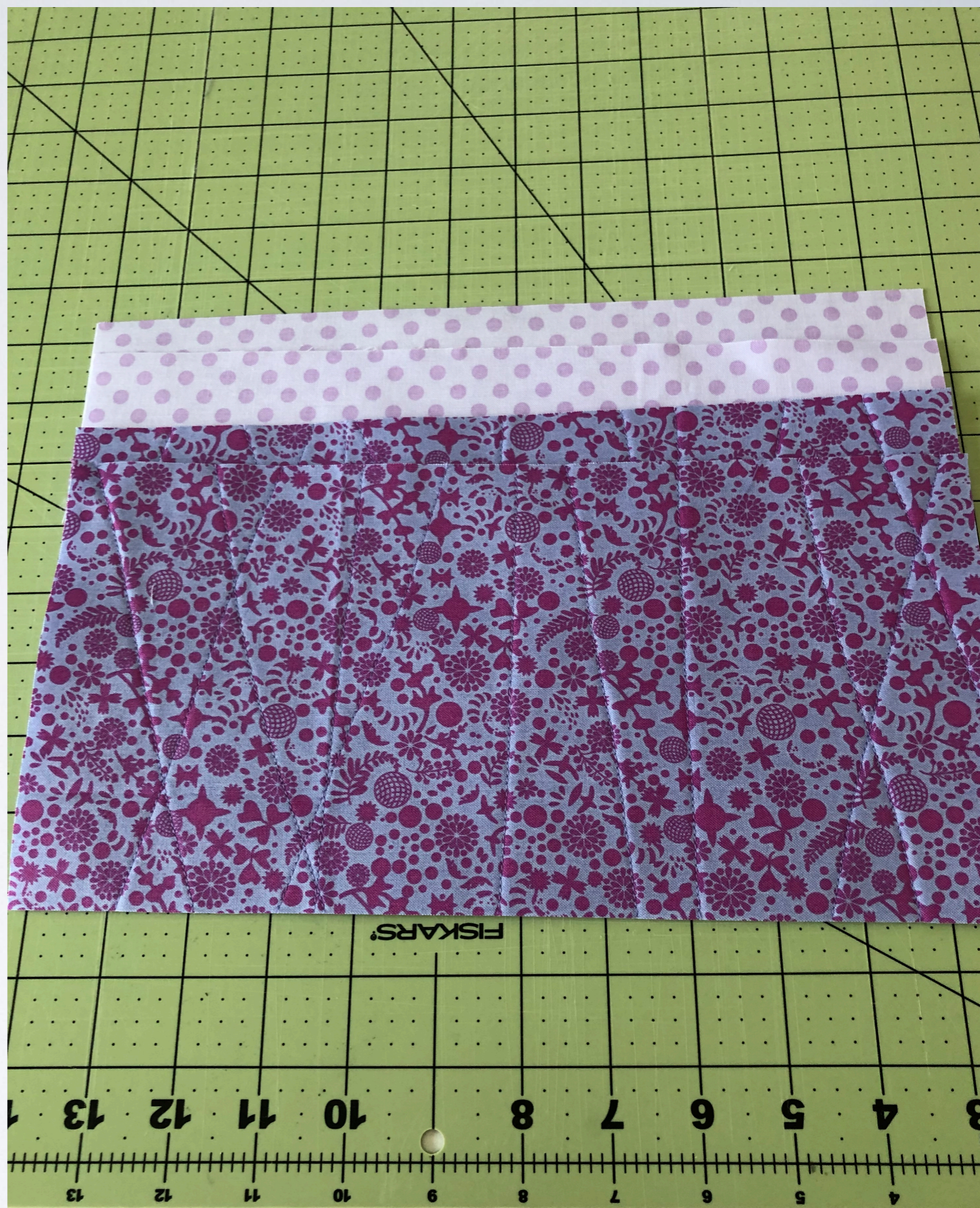


MARK TOP CORNERS

- Using the template
- Mark the top corners of both lining and main fabric.
- fabric.

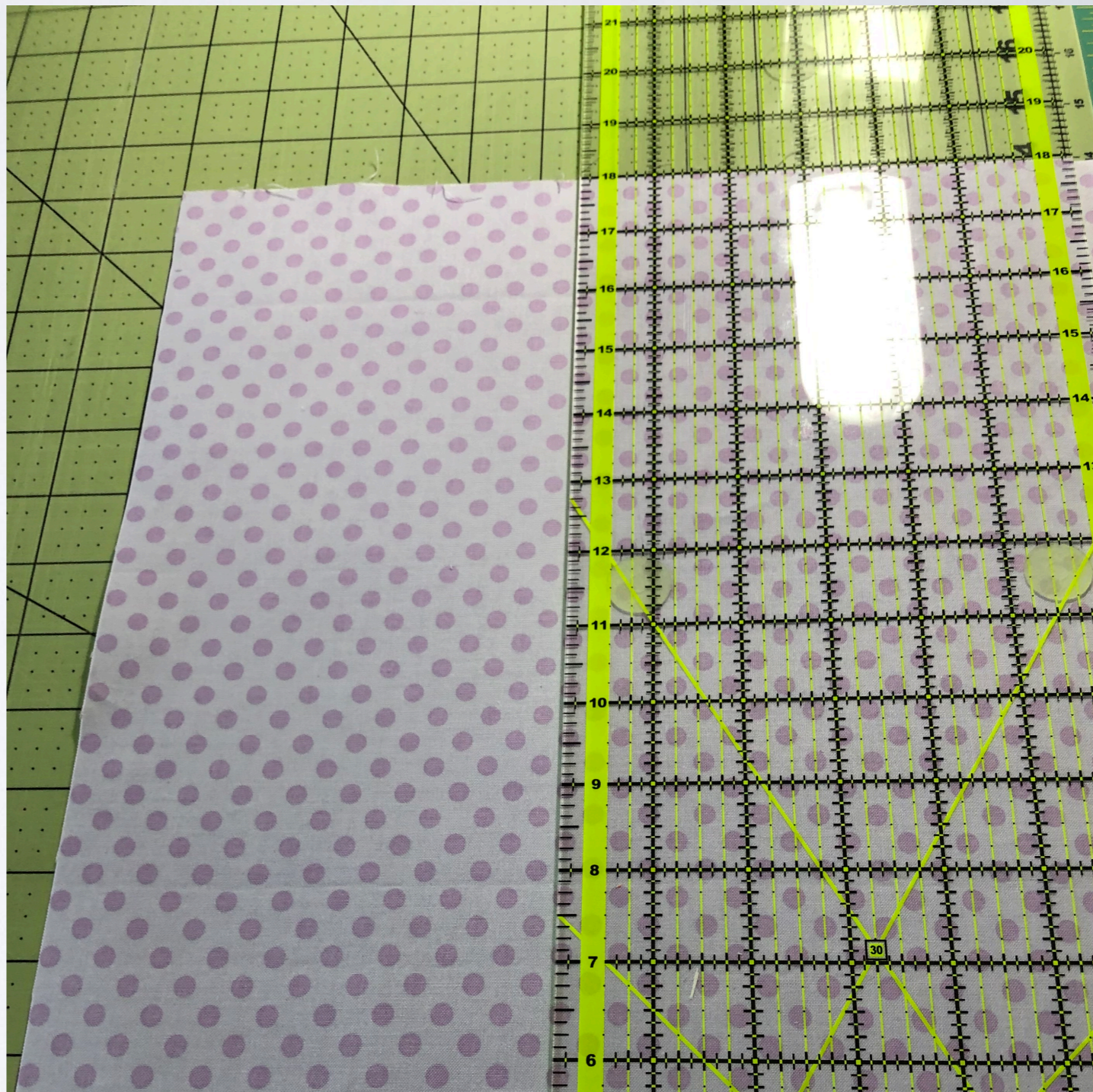


QUILT MAIN FABRIC

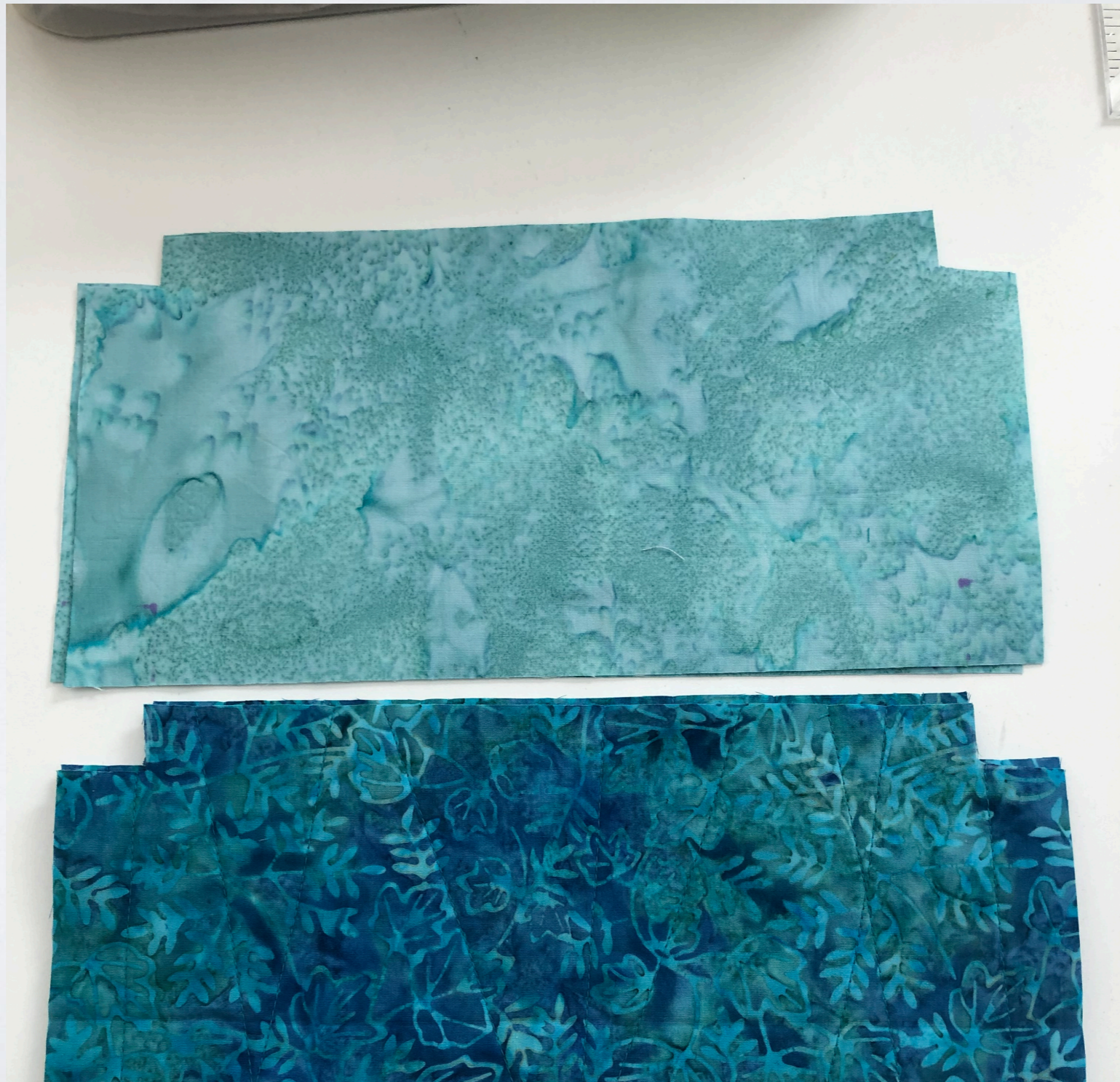


TRIM SQUARES

- Trim both lining and main fabric squares to 12 inches square.



- Cut each piece of main fabric and lining in half lengthwise to measure 6" x 12" for large bag.



- Cut out notch on the top edge of outside and lining.



ZIPPER STEP 1

- Place zipper right side down on top of main fabric matching edges.
- Pin in place



STEP 2

- Stitch 1/8 inch along the zipper/fabric edge



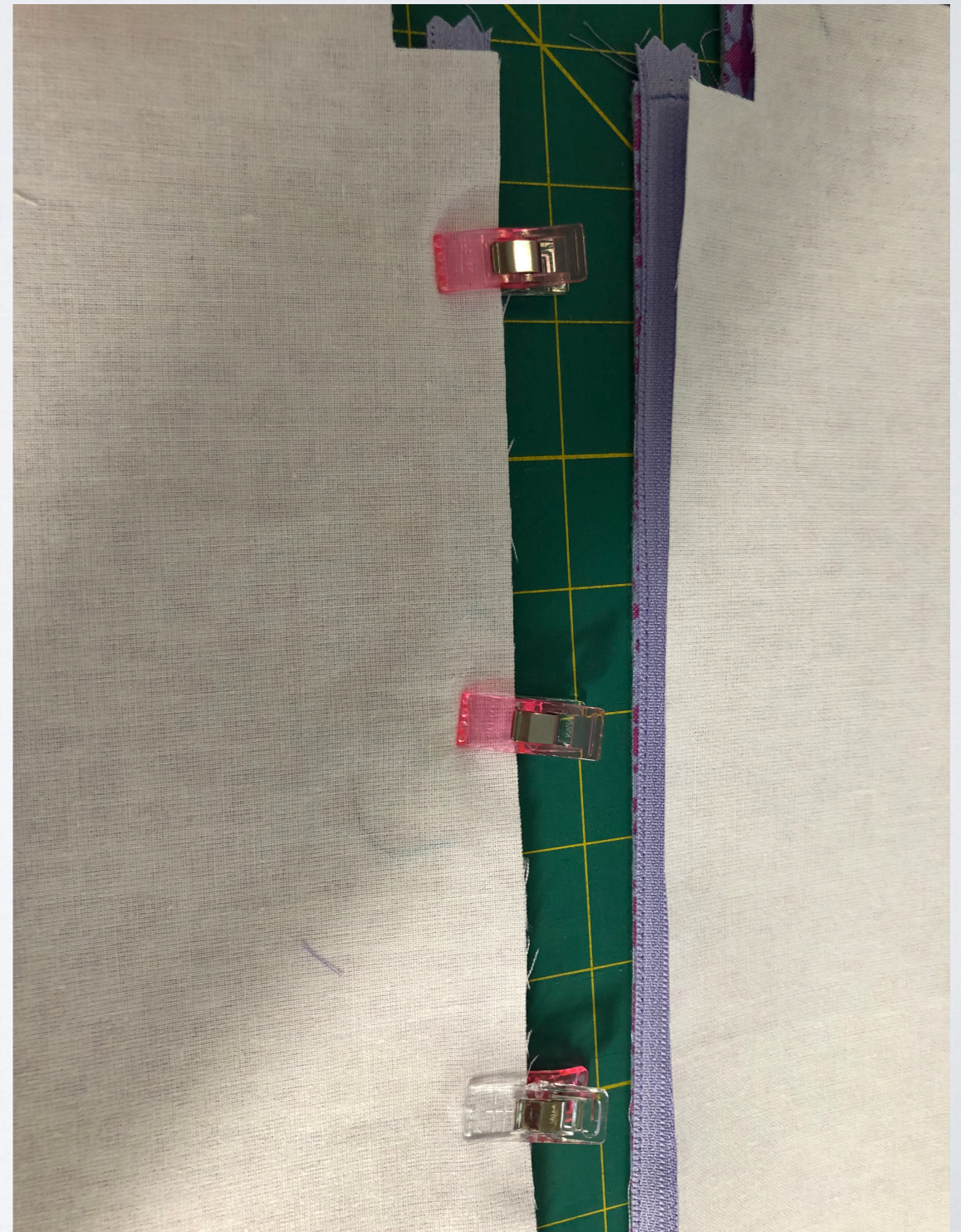
STEP 3

- Pin main fabric to other side of zipper.
- Make sure both sides match.
- On zipper side, stitch 1/8" from edge.



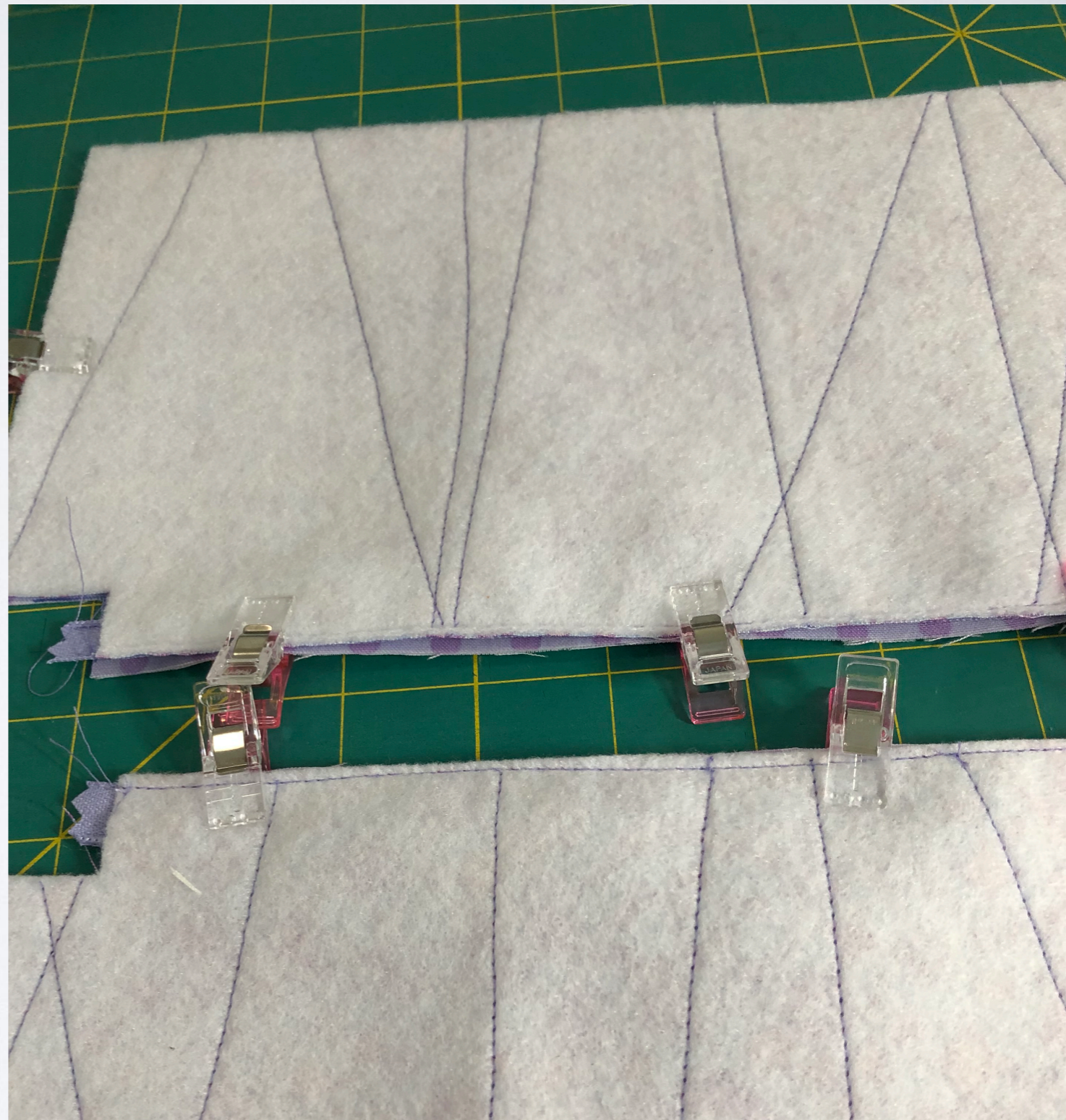
ADD LINING TO ZIPPER

- Step 4
- Pin lining to back of zipper
place lining right side down
on zipper back.
- Flip to the fleece side to
stitch 1/4 inch.



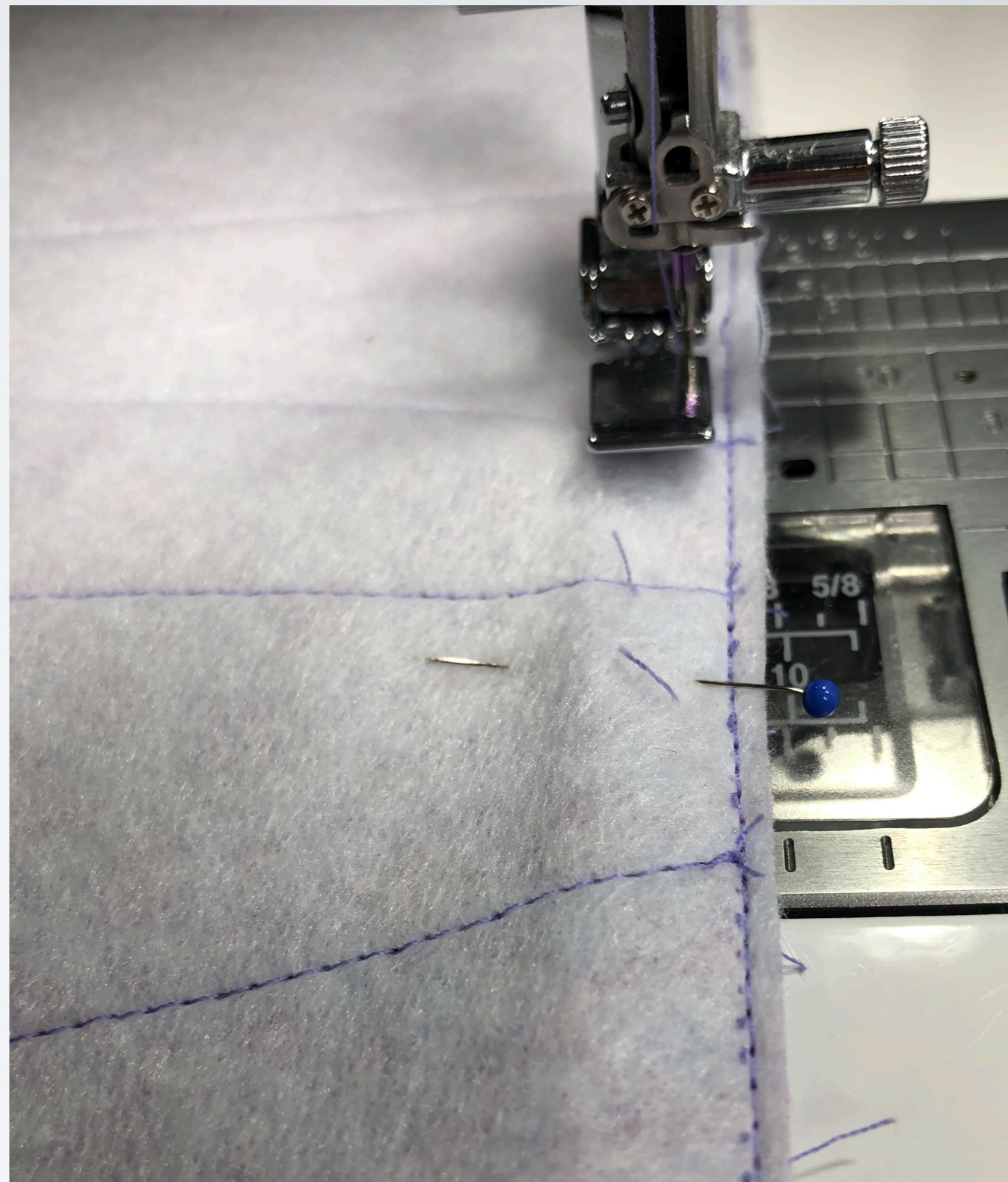
STEP 5

- Pin both lining pieces to zipper matching edges and sides.
- Be sure zipper is not twisted.



STEP 6

- Flip bag over to fleece side.
- Stitch lining to zipper on the fleece side with a 1/4" seam.



STEP 7

- Fold lining and main fabric back from zipper matching wrong sides.
- Press along zipper



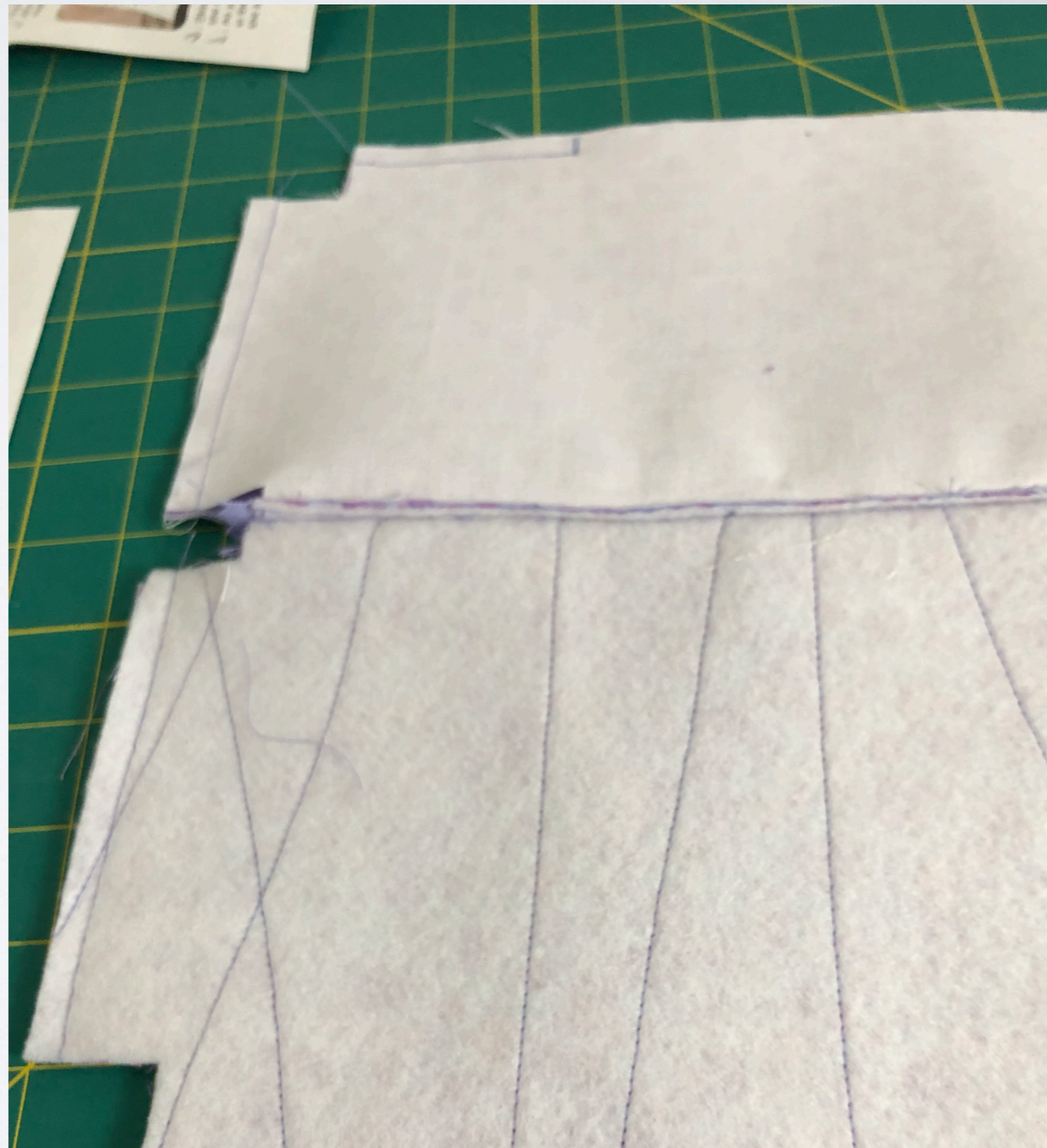
STEP 8

Top stitch along both
sides of zipper 1/8 inch
Cut bottom corners with
Template
Check that zipper is not
twisted.



SEW LINING AND MAIN FABRIC TOGETHER

- Open zipper at least 5 inches making sure it is not twisted and lays flat.
- Match the 2 main fabric sides and the 2 lining pieces together pin.
- Mark a 5" opening at the bottom of lining. Do not stitch.
- Stitch around all sides 1/4"
- Do not stitch cut outs.



CLOSE BOTTOM CORNERS

- Reach inside the bag through lining and unzip zipper all the way.
- Press corner seams flat.
- Pinch corner cutout to match seams.
- Leave the top corners at the zipper alone for now.



STITCH CORNERS

- Stitch corner closed.
- Repeat for all bottom corners on main fabric and lining.



STITCH ALL CORNERS.



CLOSE LINING

- Pull lining out of bag
- Match seams and stitch closed.



TUCK LINING INTO BAG

- Smooth lining into the bag.
- Match cutout of lining and bag on both ends of zipper and pin.



TRIM ZIPPER, PREPARE HANDLES

- Zip zipper on the bag.
- Make a mark 5 1/2" from the zipper stop at the closed end of the zipper.
- Trim and staple the near the cut end



HANDLES

- Use the 5 1/5" piece of zipper.
- Trim to 5" or leave for longer handles
- Pull zipper pieces apart.
- Use for a handle at each end of bag.



PIN ON THE HANDLES

- Match the lining cutouts with the outside fabric and pin.
- Position one end of the 5" zipper handle 1/2" above the corner cutout with teeth right side up and to the right.
- Bring other end of handle up making a "u". Do not twist handle. Pin in place.



TURN BAG LINING OUTSIDE

- Carefully turn bag wrong side out.



HANDLE AT CLOSED END OF ZIPPER

- Pinch cutout to center of zipper as you did on making the outside corners.



STITCH ZIPPER CORNERS

Stitch across end twice
Trim to 1/4 inch
Zig zag near the end.



FINISHING

- Complete other end of zipper corner.
- Trim zipper ends
- Zigzag along trimmed edge.
- Turn bag right side out.



- Completed Bag!



FINDINGS

- Claw zipper pull and tag found at Hobby Lobby

